



INSTALLATION TECHNOLOGIES

UNISORB[®] *Quantum* PM[™] Press Mounts



**"Revolutionary Field
Tunable Isolation . . .
Modular Elastomeric Pads!"**

"Over 100 standard individual mount configurations available. . ."

At UNISORB Installation Technologies, we have designed our line of *Quantum PM Press Mounts* to meet the installation and mounting needs for virtually any press built. From smaller tonnage presses to large transfer presses in excess of 3000 tons capacity.

UNISORB *Quantum PM Press Mounts* will provide an ideal installation. We have over 100 standard individual mount configurations available to meet the requirements of any press application.

In addition, we maintain the flexibility to provide specialty application mounts that nobody else in the mounting business offers. Our revolutionary field tunable modular elastomeric isolation pads outperform the competition - hands down!

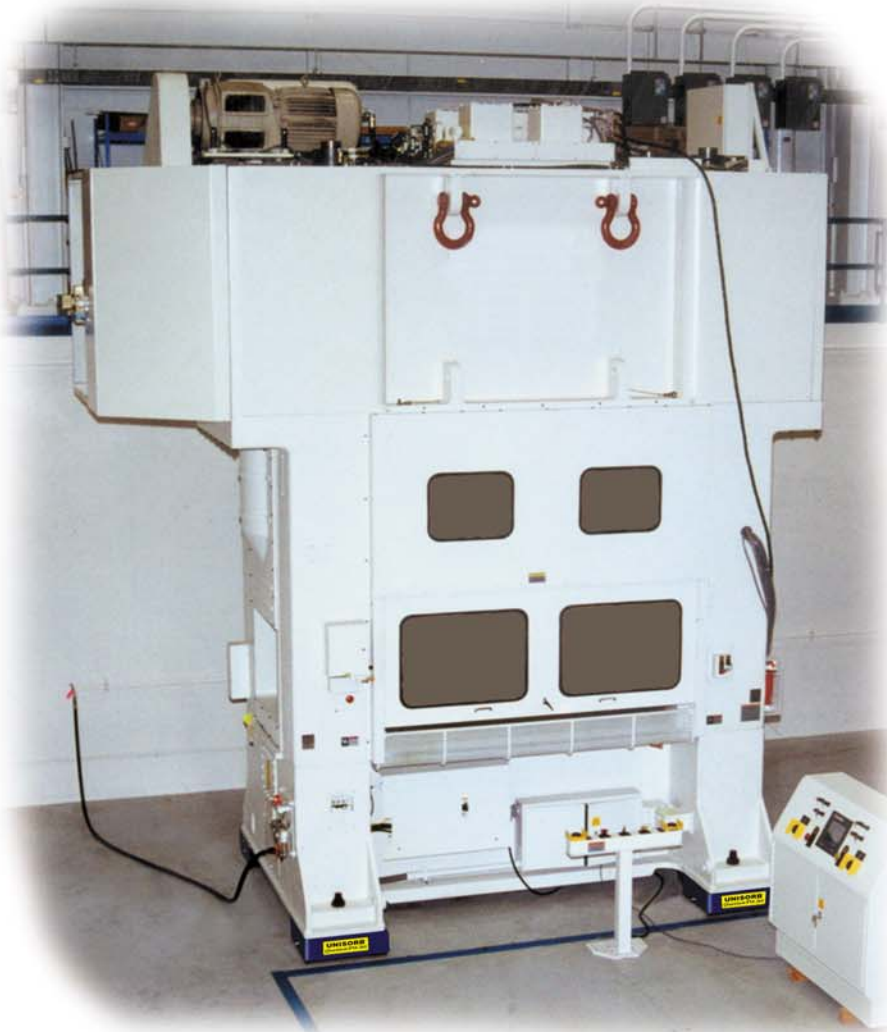
All too often presses are simply set in place without consideration for proper installation. Many predictable problems occur when this aspect of press management is ignored. Problems include excessive shock and vibration, internal press misalignment, premature die wear, press "walking", etc. These problems lead to expensive downtime and maintenance, which can be avoided. The simple solution to your press installation needs is to call UNISORB and depend on our many years of experience to provide you with a worry-free installation.

UNISORB offers exceptionally rugged basic construction of cast ductile iron and structural steel, assuring many years of trouble-free service in the most demanding applications. UNISORB's experienced engineering department thoroughly reviews each application. The modular elastomeric isolation pads we offer provide the best mounting system available anywhere. We have developed a revolutionary tunable isolation system that permits us to provide specific mount characteristics, meeting exact application requirements.

UNISORB offers free on-site installation assistance throughout North America and in many locations worldwide.

UNISORB also offers on-site vibration analysis and site evaluation services as well as complete professional engineering services for your installation.

For further details regarding UNISORB *Quantum PM Press Mounts* and other services, contact a UNISORB team member at 1-888-4-UNISORB.



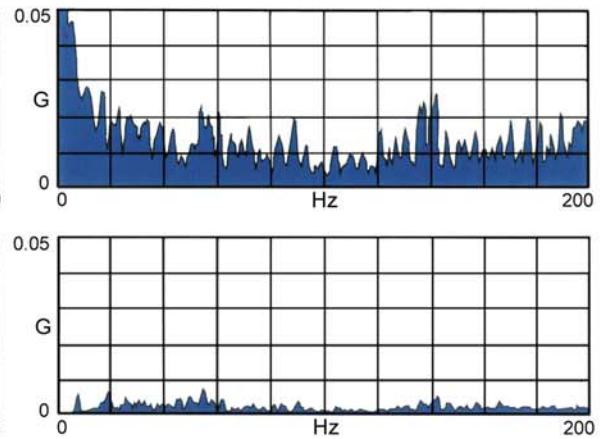
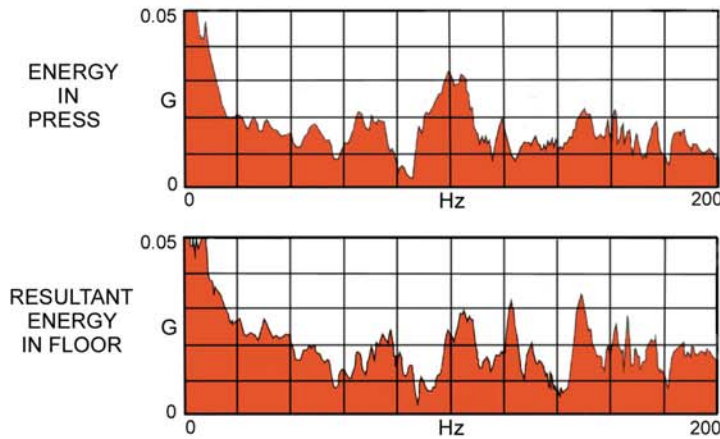
Press mounted on UNISORB *Quantum PM-261 Press Mounts*

Tuning Makes A Difference

Competitor Results



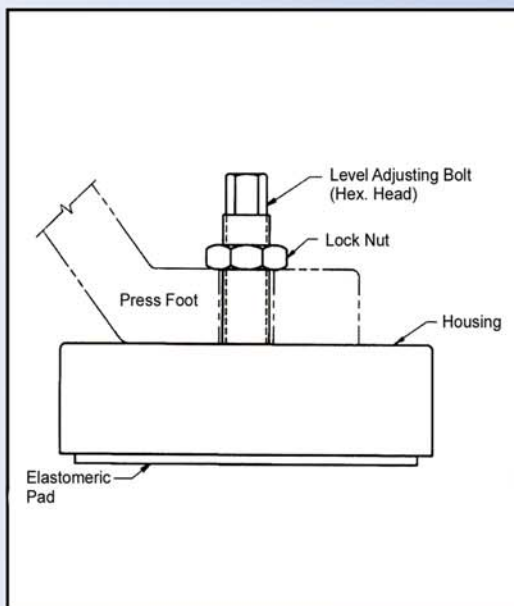
Results



Actual Test Results Vibration Analysis Documented on Comparable 200 Ton Presses.

Eliminate press installation problems with UNISORB[®] Quantum PM[™] Press Mounts

- Reduce installation costs
- Easy leveling and fast, accurate alignment
- Control shock and vibration
- Eliminate press "walking"
- Increase die life and decrease press wear
- Minimize expensive downtime and unnecessary maintenance
- Achieve better press productivity
- Rugged high strength mount construction
- All elastomeric isolation pad configurations
- Fastest shipments in the industry



PRESS MOUNTS	SPECIFICATIONS						BOLT SIZES
	LENGTH		WIDTH		HEIGHT (MIN.)*		
	in.	mm	in.	mm	in.	mm	
PM-61	7.00	178	4.50	114	2.50	64	M16 thru M24
PM-81	8.00	203	5.88	149	2.50	64	M20 thru M30
PM-101	10.00	254	7.88	200	3.25	83	M20 thru M36
PM-121	12.50	318	9.00	229	3.50	89	M24 thru M42
PM-161	16.00	406	12.50	318	4.50	114	M30 thru M56
PM-201	20.00	508	16.00	406	6.00	152	M42 thru M80
PM-261	26.00	660	22.00	559	10.50	267	M64 thru M100
PM-301	30.00	762	24.00	610	9.50	241	3.00" thru 4.50"
PM-321	32.00	813	24.00	610	10.50	267	3.00" thru 5.00"
PM-351	35.00	889	20.00	508	11.00	279	3.00" thru 5.00"
PM-381	38.00	965	25.50	648	13.00	330	4.50" thru 6.00"
PM-421	42.00	1067	24.00	610	14.75	375	4.50" thru 6.00"
PM-481	48.00	1219	36.00	914	15.50	394	5.00" thru 7.00"

*Top of mount housing to floor.

MACHINE INSTALLATION EXPERTISE SINCE 1935

Since 1935 UNISORB has been serving the machinery installation needs of all segments of the manufacturing industry. As a part of our commitment to provide the best installation products and services, UNISORB maintains the only industry staff of engineers devoted exclusively to the design and implementation of complete machinery installation systems. From concept to final installation, UNISORB ensures optimum performance of mounted equipment.



Depend on UNISORB's years of experience for:

- *Machinery Mounts*
- *Vibration Isolation Systems*
- *Anchoring/Alignment Systems*
- *Vibration Analysis Services*
- *Professional Engineering Services*
- *Isolated Foundation Design*
- *Advanced Grouting Technologies*



INSTALLATION TECHNOLOGIES

www.unisorb.com

BOX 1000, JACKSON, MI 49204-1000

888-4-UNISORB • 517-764-6060

ISO-9001 Certified